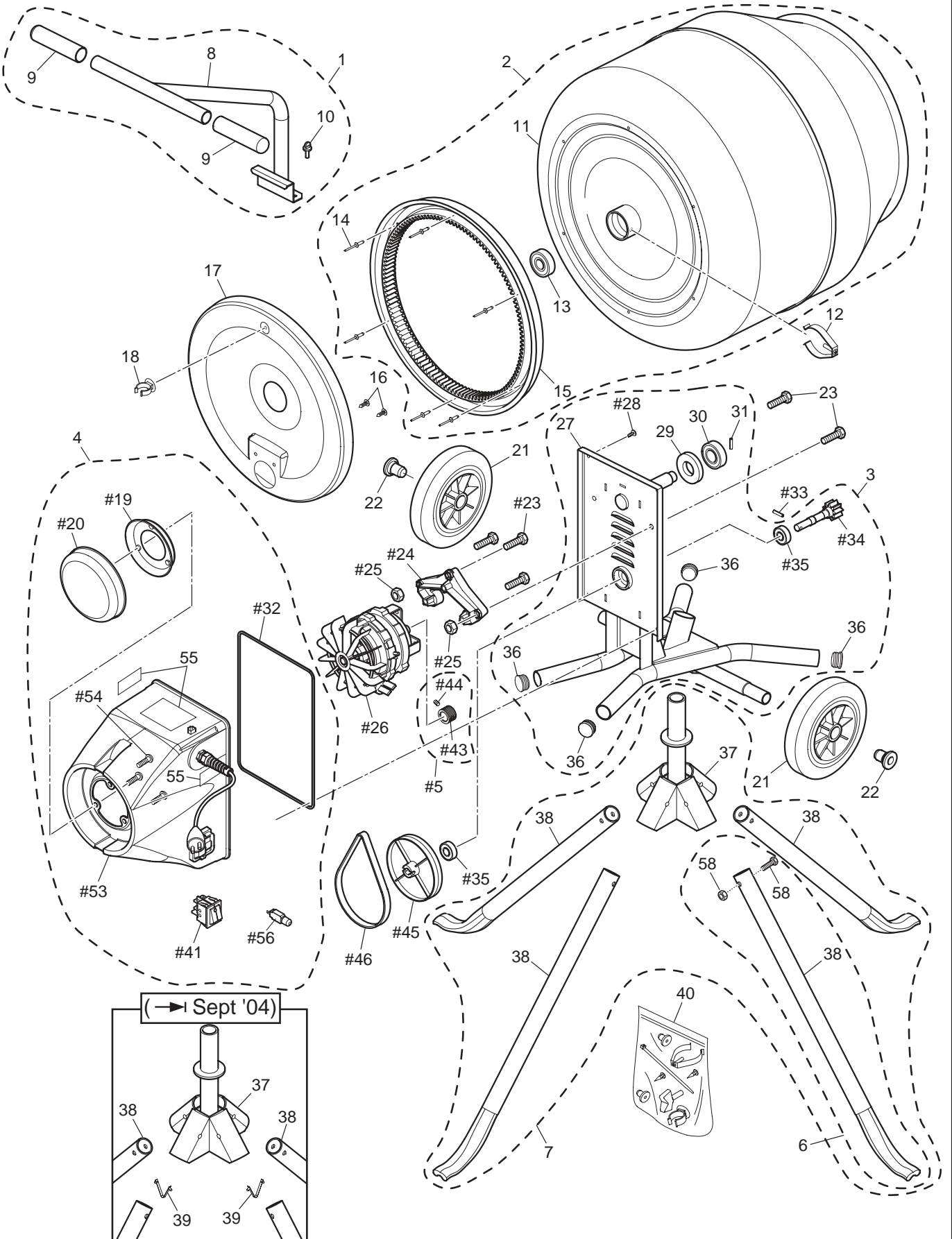




BELLE GROUP MINIMIX 130 (UL) → 4/02



REPLACEMENT PARTS / PIÈCES DE RECHANGE / REPUESTOS



854/10123/3 05/05 Minimix 130 (UL) Page 1 of 2

540 - 345 - 5090

540 - 345 - 5091

bellegroupinc@aol.com

BELLE GROUP INC, Electric Road SW, Suite 360, Roanoke, VA 24018, USA



BELLE GROUP MINIMIX 130 (UL) → 4/02



REPLACEMENT PARTS / PIECES DE RECHANGE / REPUESTOS

ITEM NUMBER ⁽¹⁾	PART NUMBER ⁽²⁾	DESCRIPTION ⁽³⁾
1	901-14800	HANDLE ASSEMBLY
2	901-14900	DRUM ASSEMBLY
3	901-15000	MAINFRAME ASSEMBLY
4	901-11800	MOTOR COVER UL (115V - 60HZ)
5	901-15100	KIT 60Hz MULTI-VEE PULLEY
6	901-14600	STAND LEG ASSEMBLY
7	901-14700	STAND ASSEMBLY
8	901-13700	HANDLE
9	900-99906	HANDLE GRIP
10	7-8046	THUMB SCREW (M8x20)
11	👁️ 2	DRUM
12	3-1009	DRUM CLIP
13	53-0003	BEARING (6304-2Z)
14	3-0038	RIVET STEEL (4.8 X 16)
15	901-99905	GEAR RING
16	3-7020	PUSH CLIP
17	901-99955	GEAR COVER
18	3-7019	PIPE CLIP
#19	901-99941	SHIELD MOTOR COVER INNER - UL
#20	901-99942	SHIELD MOTOR COVER OUTER - UL
21	60-0285	WHEEL
22	900-11400	RETAINER WHEEL
#23	7-8009	SCREW SET (M8X30)
#24	901-99910	BRACKET MOTOR MOUNTING
#25	8-8008	NUT NYLOC (M8)
#26	901-99936	MOTOR MINI 130 (110V - 60HZ)
27	901-13500	FRAME MINI 130
#28	7-6028	SCREW TAPTITE (M6 X 14)
29	901-99934	RUBBER - DRUM BOSS PROTECTOR
30	53-0001	BEARING (6205-2Z)
31	3-0007	ROLL PIN (1/4"X1-3/8")
#32	901-99907	SEAL MOTOR COVER
#33	3-0039	PIN SPIROL (6 X 25)
#34	901-10800	DRIVE PINION
#35	53-0002	BEARING (6202-2Z)
36	3-4026	PLUG
37	901-13900	LEG SUPPORT PIVOT
38	901-99901	STAND LEG
39	SEE ITEM 57	CLIP BUTTON
40	92-00300	PARTS KIT (UL)
#41	70-0182	SWITCH ON/OFF 115V 60Hz (UL)
42	-	-
#43	901-99937	PULLEY MULTI VEE
#44	7-6029	SCREW GRUB (M6 x 6)
#45	901-99908	PULLEY LARGE
#46	901-99912	BELT
47	-	-
48	-	-
49	-	-
50	-	-
51	-	-
52	-	-
#53	901-99945	MOTOR CASE (UL)
#54	7-0008	SCREW (3.9 X 19)
55	800-22300	DECAL KIT (115V 60HZ)
#56	70-0186	SWITCH MANUAL RESET
57	92-01300	KIT BAG (STAND LEG FASTENERS)

Belle Group reserves the right to alter details and specification without notice

1) ITEM NUMBER: NUMERO DE L'ARTICLE / NÚMERO DE ELEMENTO
 2) PART NUMBER: NUMERO DE LA PIECE / NÚMERO DE PIEZA
 3) DESCRIPTION: DÉSIGNATION / DESCRIPCIÓN

CAUTION: PARTS WITH A# SHOULD ONLY BE FITTED BY A QUALIFIED ELECTRICIAN.
 PRECAUCION: LAS PARTES MARCADAS CON # SOLO DEBEN INSTALARSE POR UN ELECTRICISTA CAPACITADO.
 ATTENTION: LES PIECES MARQUEES # DOIVENT ETRE MONTEES PAR UN ELECTRICIEN QUALIFIE.

📞 540 - 345 - 5090

📠 540 - 345 - 5091

📧 bellegroupinc@aol.com